

Maatwerk lipomed® shirt dames



Besteld door _____

Contactpersoon _____

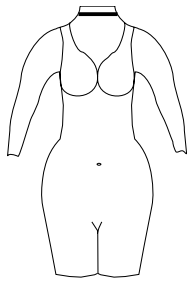
Adres _____

Postcode / Plaats _____

Telefoon _____

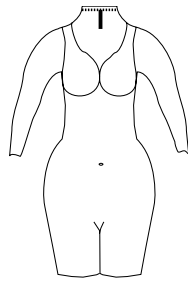
Gegevens patiënt _____

medi Belgium NV
 Staatsbaan 77/0099
 3945 Ham
 Belgium
 T +32 11 24 25 60
 F +32 11 24 25 64
 info@medibelgium.be
 www.medibelgium.be



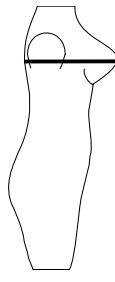
Hals
Omtrek hals

cT _____ cm*



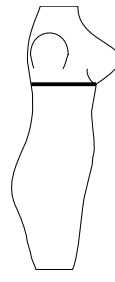
Halslijn
Gewenste diepte
halslijn

eT _____ cm*



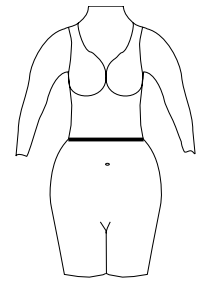
Borst
Omtrek van het
breedste deel van
de borst (met bh)

cO _____ cm



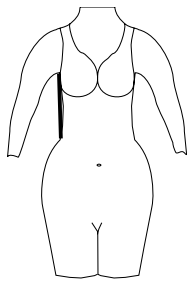
Onder de borst
Omtrek onder de
borst

cN _____ cm*



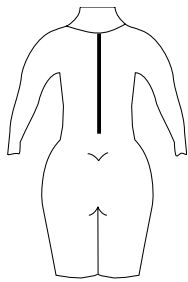
Taille
Omtrek taille

cM _____ cm*



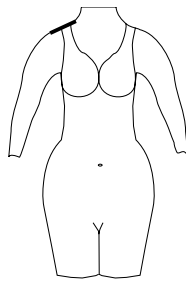
Zij
Zijlengte van oksel
tot taille

ePM _____ cm*



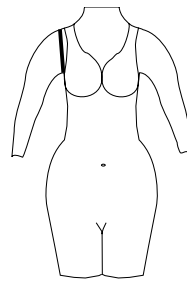
Rug
Ruglengte van
halslijn tot taille

eTM _____ cm*



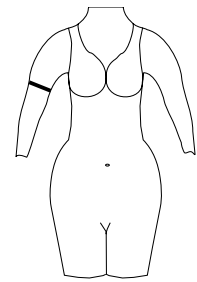
Schouder
Van halslijn tot het
einde van de schouder

eTP _____ cm*



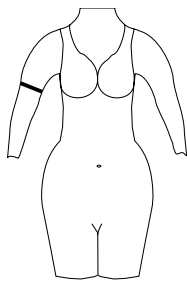
Okselholte
Omtrek okselholte

cP _____ cm*



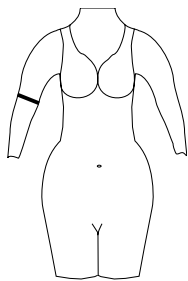
Bovenarm
Omtrek biceps,
proximaal

cQ _____ cm*



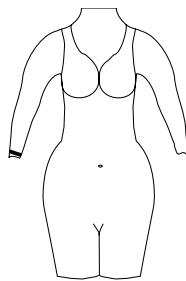
Biceps
Omtrek biceps,
midden

cR _____ cm



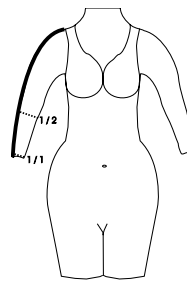
Elleboog
Omtrek elleboog
in licht gebogen
positie

cY _____ cm



Pols
Omtrek pols

cS _____ cm



Armlengte
Schouder tot
gewenste
armlengte

ePY ^{1/2} _____ cm*

ePS ^{1/1} _____ cm*

Gelieve ook de
BH-maat op te
geven (vb. 80 C)

* Lichaamsmaten = maten eindproduct

Gewenste leverdatum _____

medi. I feel better.