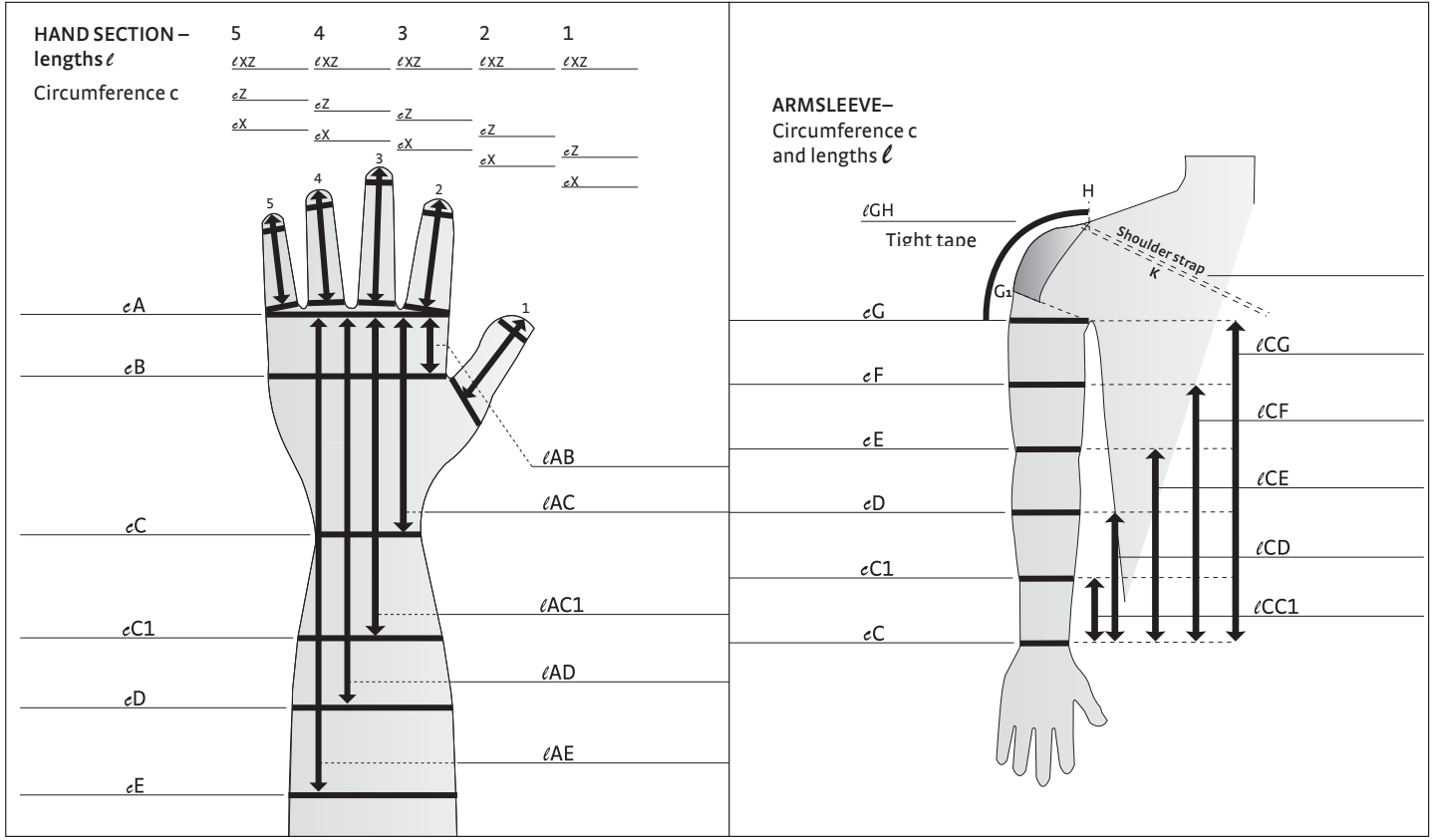




Customer: \_\_\_\_\_  
 Order No.: \_\_\_\_\_ Delivery address: \_\_\_\_\_  
 Patient name: \_\_\_\_\_  
 Order date: \_\_\_\_\_

Stamp: \_\_\_\_\_  
 Signature: \_\_\_\_\_

mediven® compression garments arm / hand flat-knitted with seam



Model	Compression CCL 1 2 3	Standard colours	Trend colours*	Quantity	Options
<input type="checkbox"/> mediven esprit <input type="checkbox"/> mediven 550 Arm	Hand section <input type="checkbox"/> <input type="checkbox"/> <input type="checkbox"/> Armsleeve <input type="checkbox"/> <input type="checkbox"/> <input type="checkbox"/>	<input type="checkbox"/> Sand <input type="checkbox"/> Caramel <input type="checkbox"/> Black <input type="checkbox"/> Cashmere	Please see www.mediuk.co.uk for list of current trend colours and Design-Elements	pcs. _____	<input type="checkbox"/> left <input type="checkbox"/> right <input type="checkbox"/> Fingers open <input type="checkbox"/> Fingers closed

Variants	Standard border (proximal)	Variable Border	Other accessories
<b>Handsection</b> <input type="checkbox"/> AC1	straight (porous – 2 cm)	<input type="checkbox"/> flat oblique <input type="checkbox"/> steep oblique	<b>Position</b> <input type="checkbox"/> along the oblique border <input type="checkbox"/> on the palm <input type="checkbox"/> Lymphpad <input type="checkbox"/> Padding <input type="checkbox"/> Pocket (please specify position and size in Special request box) <input type="checkbox"/> Anti-slip patch on palm <input type="checkbox"/> Zips <input type="checkbox"/> Lining (please specify position and size in Special request box)
<input type="checkbox"/> AD / AE	flat oblique	<input type="checkbox"/> steep oblique <input type="checkbox"/> straight	
<b>Armsleeve</b> <input type="checkbox"/> CD / CE / CF / CG	flat oblique	<input type="checkbox"/> steep oblique <input type="checkbox"/> straight	
<input type="checkbox"/> AF / AG (1-part)	flat oblique	<input type="checkbox"/> steep oblique <input type="checkbox"/> straight	

Attachment
<input type="checkbox"/> Silicone topband <input type="checkbox"/> narrow 2,5 cm <input type="checkbox"/> wide 5 cm <input type="checkbox"/> Silicone topband with motif (5 cm) <input type="checkbox"/> Profile topband (5 cm) <input type="checkbox"/> Sensitive topband (5 cm)
<input type="checkbox"/> with shoulder strap K strap width: <input type="checkbox"/> 2,5 cm <input type="checkbox"/> 5 cm <input type="checkbox"/> with bra attachment width of bra strap: _____ cm
<input type="checkbox"/> shoulder cap (Standard) <input type="checkbox"/> shoulder cap anatomical _____ cm

Accessories
Knitting marks elbow <input type="checkbox"/> 160° (Standard) <input type="checkbox"/> 150° <input type="checkbox"/> 135° <input type="checkbox"/> Flexure functional zone elbow

Special requests

\* Delivery period up to 10 working days. For more information go to www.mediuk.co.uk or email m2m@mediuk.co.uk  
 medi does not take responsibility for contraindicated use of these garments or for incorrect measurements.



medi

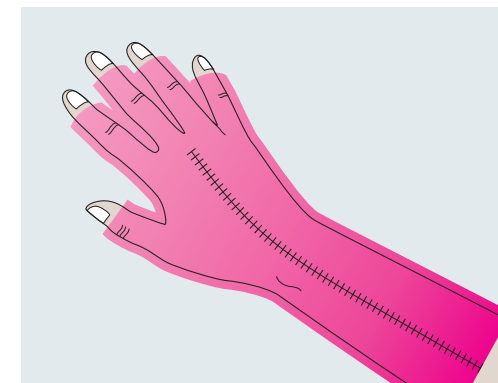
## mediven® hand and arm care solutions

medi bases its measuring technology on the guidelines of the Federal Academy for Orthopaedic Technology in Dortmund.

- Low-compression stockings and hand pieces should only be measured after an optimal decongestion result has been achieved.
- Circumferences and lengths are measured from distal to proximal.
- To ensure precise measurements, we recommend marking the measurement points with a soft pencil (e.g. a kohl pencil).
- For lymphatic treatments, measuring is conducted under tension depending on the measurement point.
- An experienced measurer is responsible for determining the dosage, which depends on the characteristics of the oedema and tissue, fibrosis, localization of oedema, mobility and the patient's strength.
- The circumference of the finger is not measured under tension. Millimetre-precision is required here.
- With medi, you generally get "oblique borders" for indication-appropriate treatment!

### Hand care

mediven hand pieces are available in different versions and lengths (AC1, AD / AE). Depending on the symptoms and the individual needs of the patient, you can choose from open or closed fingers, the fingerless version or with the thumb opening or thumb piece.



### Arm care

In general, oedema treatment requires compression of the whole arm, or a combination of a sleeve and handpiece. Here you can choose between a single-piece (AF or AG) or two-piece (CF / CG plus AC1 or AD / AE) solution. With the two-piece option, usually a CG sleeve is worn together with an AC1 hand pieces, overlapping. If you order both products together, you receive a hand pieces with a porous woven section between C and C1. If you order individually, you will receive a hand pieces with a straight, two-centimetre, porous closure.



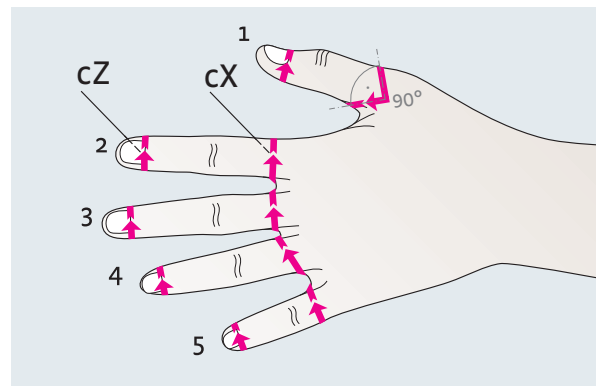
## Measurements for mediven® flat knit arm garments

2018

medi. I feel better.

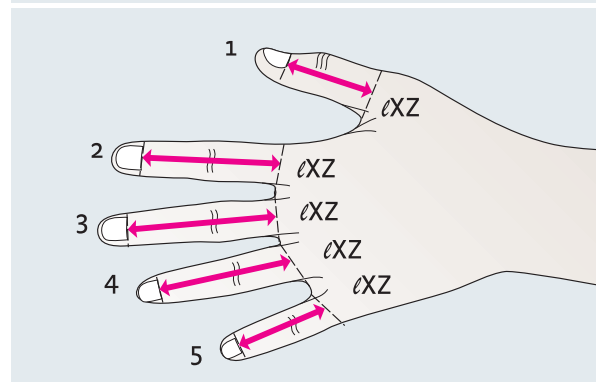


# Measuring the hand and fingers



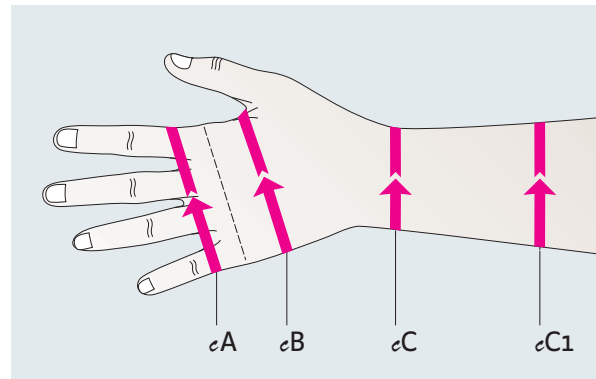
## 1. Finger circumference

- Place the hand lightly on to a surface, with the back of the hand facing upwards.
- Measure the cX circumferences at the web part of each finger.
- Measure the cZ circumferences at the base of the nail bed on each finger.
- Mark the measurement points for the length measurement.



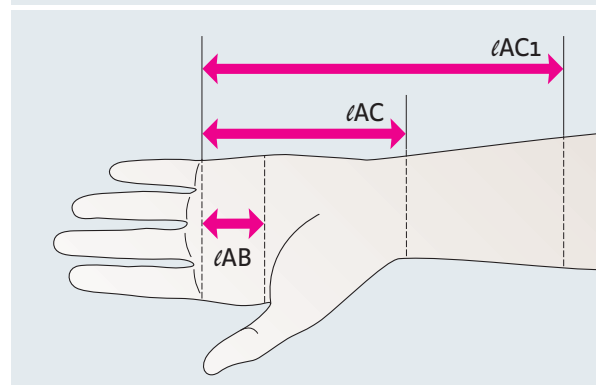
## 2. Finger length

- Place the hand on to a surface, with the back of the hand facing upwards.
- The length measurements are taken from the start of the finger webbing to the desired marking (see finger circumference, fig.1).



## 3. Hand circumference

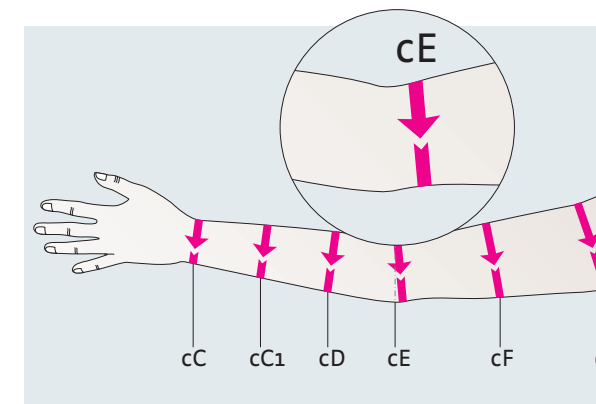
- The hand should be lightly pressed on to the surface, with the back of the hand facing upwards.
- Take the circumference measurements.
- Mark the measurement points for the length measurements on the palm side.



## 4. Hand length

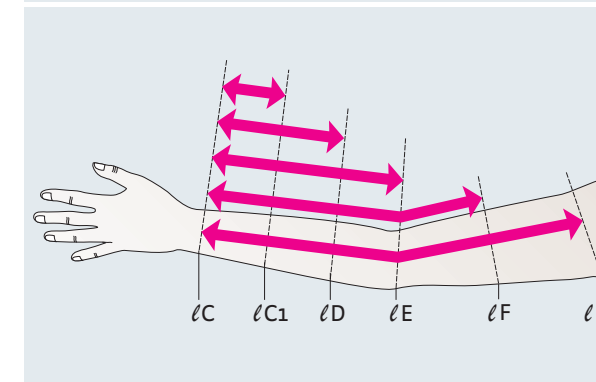
- Place the hand on to a surface, with the palm of the hand facing upwards.
- The length measurements are taken from marking to marking (see hand circumference, fig.3).

# Measuring the arm



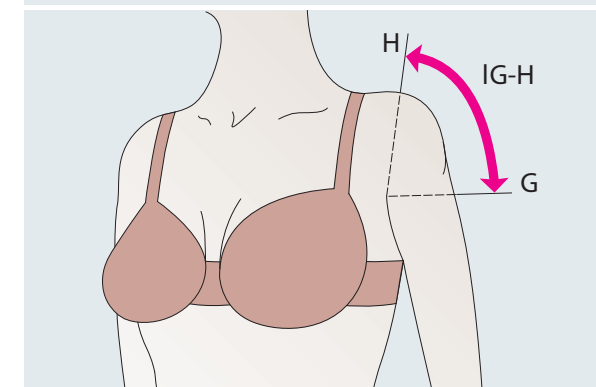
## 5. Arm circumference

- Place the hand and lower arm lightly on to a surface.
- Take the circumference measurements at the specified measurement points.
- Mark the measurement points for the length measurements on the inside of the arm.



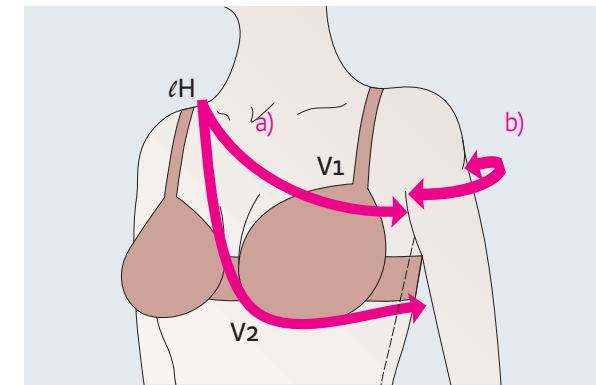
## 6. Arm length

- Place the hand and lower arm on to a surface, relaxed, with the arm stretched out.
- Take the length measurements from lC to lC1, lC to lD, etc., up to lG, along the line that starts mid-wrist (transition to main thumb joint), past the inside elbow, up to the front axillary fold, from marking to marking (see arm circumference, fig. 5).



## 7. Shoulder length

- For the shoulder cap measure from point G to H, with H reaching to the top of the bra strap.  
  
Make sure not to measure beyond the bra strap.



## 8. Fastening

- Shoulder strap  
Measure the length of the shoulder strap circularly, according to version 1 or 2.
- Shoulder caps  
For anatomical shoulder caps, give the length from the front to back axillary fold.